

## Typical Traffic Control Plan for Shoulder Work on All Roads

Contractor Name: \_\_\_\_\_ Contractor Phone: \_\_\_\_\_  
On-site Supervisor: \_\_\_\_\_ On-site Phone: \_\_\_\_\_  
Job Location: \_\_\_\_\_ 24-Hour Emergency Phone: \_\_\_\_\_  
Start Date: \_\_\_\_\_ Completion Date: \_\_\_\_\_  
Barricade Co. and Phone: \_\_\_\_\_  
Scope of Work: \_\_\_\_\_  
\_\_\_\_\_  
\_\_\_\_\_

Permit Number: \_\_\_\_\_

Formulas for L:

For Posted  
Speed Limit 40 mph or less.

$$L = \frac{WS^2}{60}$$

For Posted Speed Limit  
45 mph or greater.

$$L = WS$$

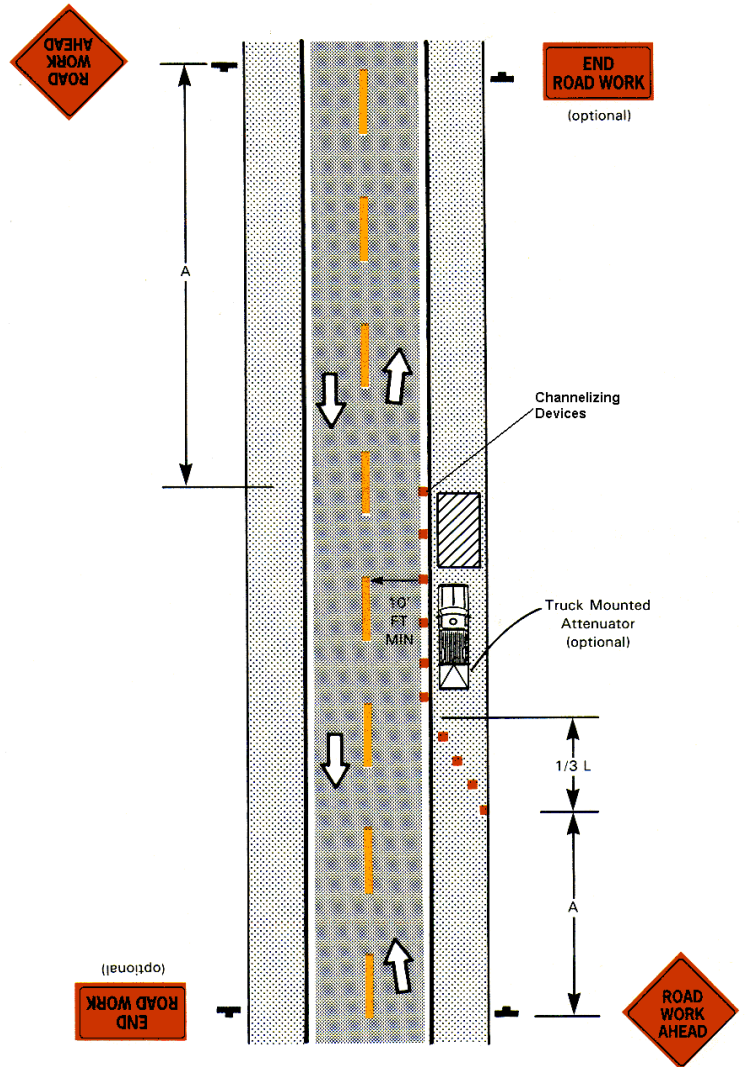
Where: L = taper length in feet  
W = width of offset in feet  
S = posted speed limit

A = 100' for speeds 30 mph or less

A = 350' for speeds 35 mph or greater

Channelizing devices are spaced  
equal to the speed limit in feet  
(30mph = 30 feet).

Figure TA-6 Shoulder work with minor encroachment.



### NOTE:

1. No lane closures on arterials and collectors are allowed between 7 a.m. and 9 a.m. and between 3:30 p.m. and 6 p.m. unless otherwise approved.
2. All traffic control procedures and devices must conform to Part VI of the Manual on Uniform Traffic Control Devices.
3. No open overnight trenches/holes are allowed in the right of way.
4. The Transportation Engineering Division must approve any changes to this plan.
5. 10' minimum lane widths.
6. This typical is approved by the City of Lakewood Transportation Engineering Division.