

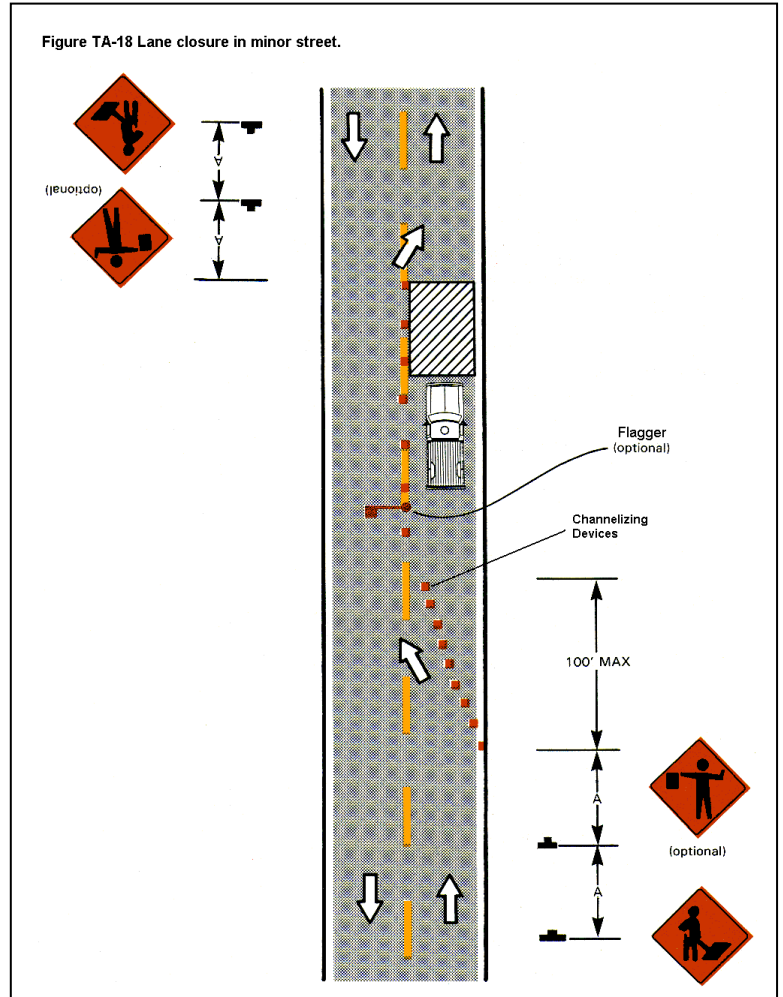
Typical for a One-Lane Closure on a Local Street

Contractor Name: _____ Contractor Phone: _____
On-site Supervisor: _____ On-site Phone: _____
Job Location: _____ 24-Hour Emergency Phone: _____
Start Date: _____ Completion Date: _____
Barricade Co. and Phone: _____
Scope of Work: _____

Permit Number: _____

A = 100' for speeds 30 mph or less

Channelizing devices are spaced equal to the speed limit in feet
(30 mph = 30 feet).



NOTE:

1. No lane closures on arterials and collectors are allowed between 7 a.m. and 9 a.m. and 3:30 p.m. and 6 p.m. unless otherwise approved.
2. All traffic control procedures and devices must conform to Part VI of the Manual on Uniform Traffic Control Devices.
3. No open overnight trenches/holes are allowed in the right of way.
4. The Transportation Engineering Division must approve any changes to this plan.
5. Flaggers are required where poor sight distance exists (e.g., hills or curves).
6. This typical is approved by the City of Lakewood Transportation Engineering Division.