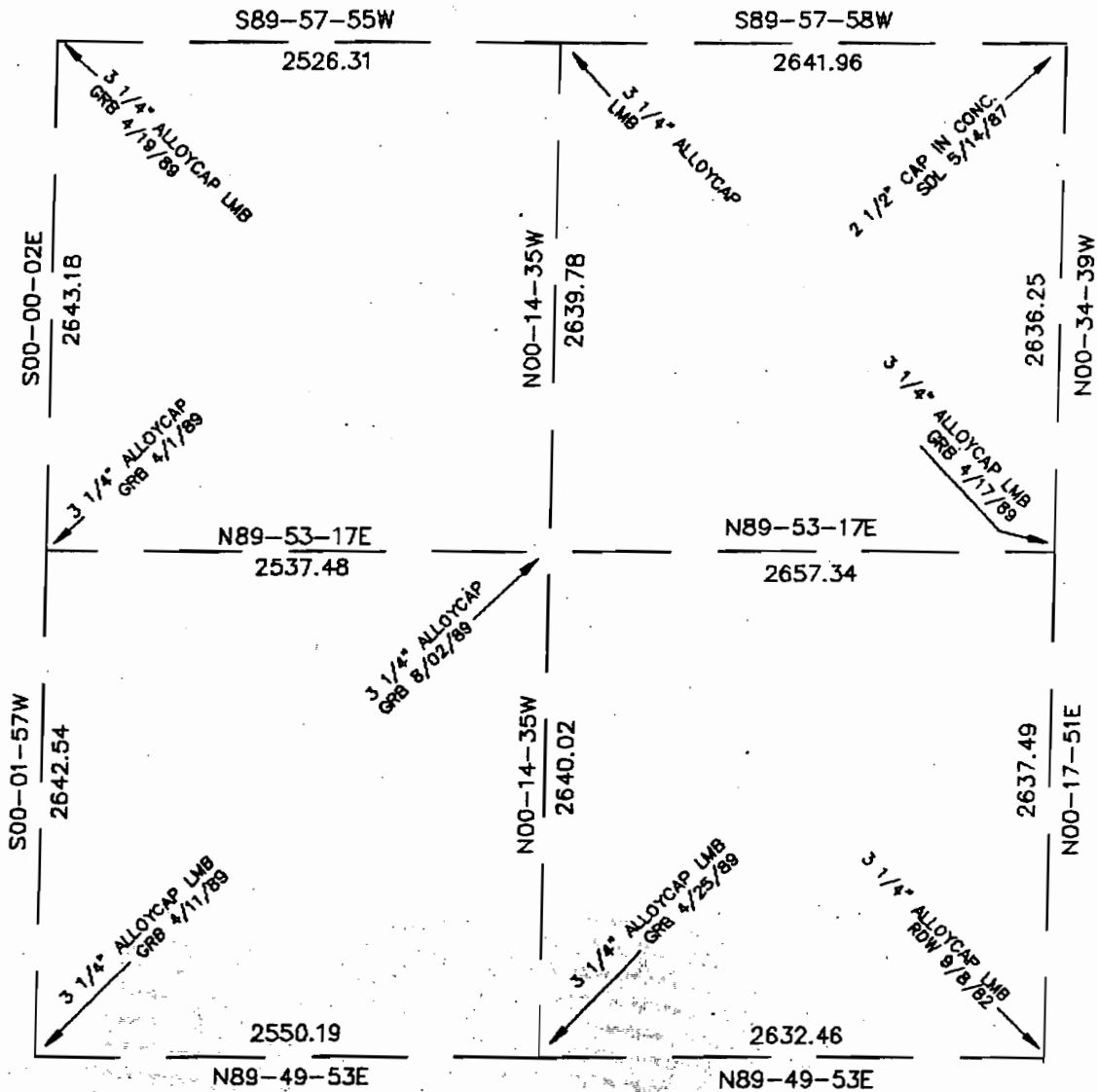


SECTION BREAKDOWN INFORMATION



ANGULAR ERROR OF CLOSURE: 00-00-09.4  
 LINEAR ERROR OF CLOSURE AFTER ANGULAR ADJUSTMENT: 0.34'  
 TOTAL TRAVERSE LENGTH: 21406.4'  
 SURVEY PRECISION: 1:61957  
 BASIS OF BEARING: THE WEST LINE OF THE N.W. ONE-QUARTER IS ASSUMED TO BEAR S00-00-02E

NORTH