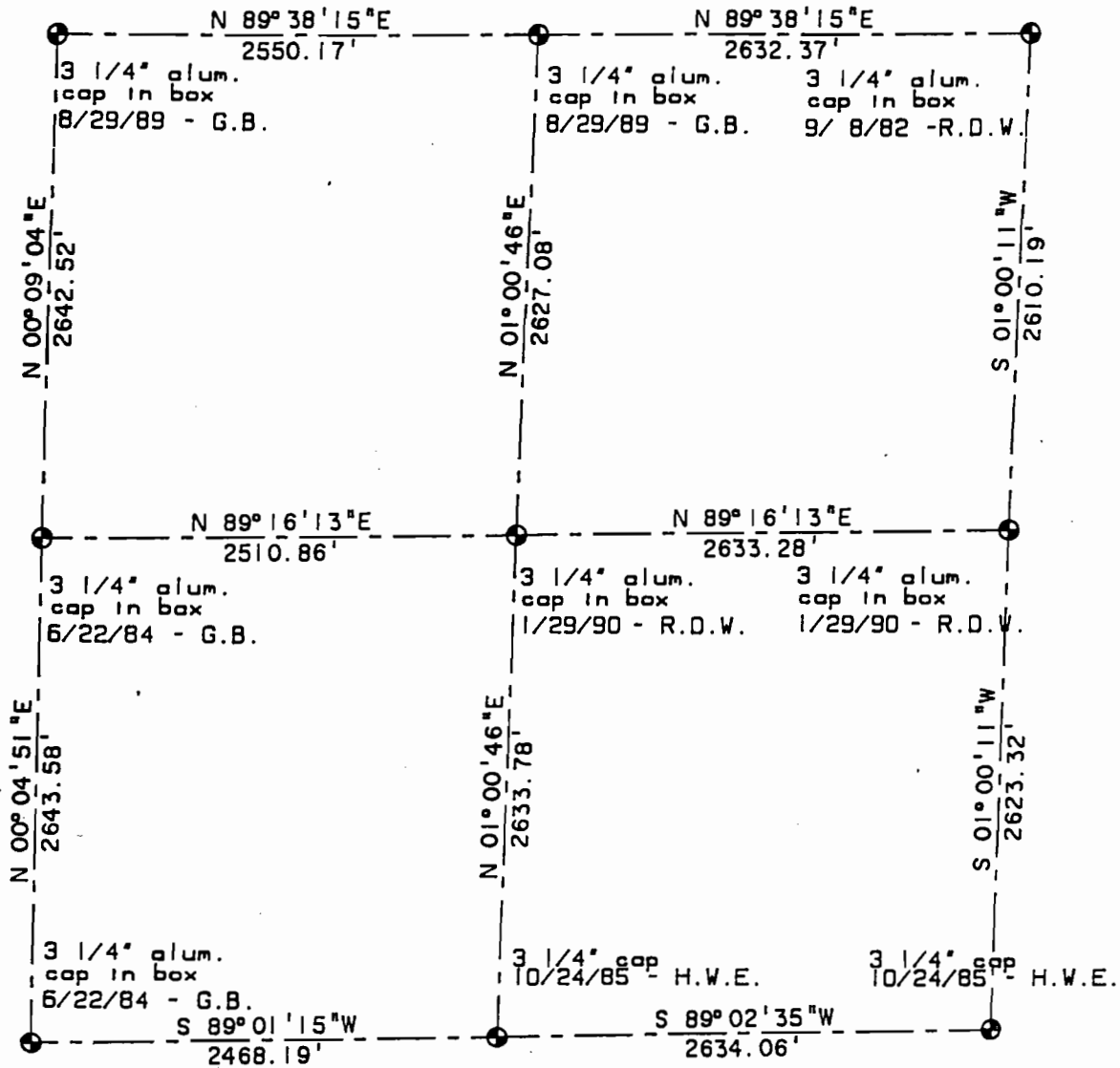


SECTION BREAKDOWN INFORMATION  
REVISED

SCALE: 1" = 1000'



ANGULAR ERROR OF CLOSURE: 00° 00' 18"  
 LINEAR ERROR OF CLOSURE AFTER ANGULAR ADJUSTMENT: 0.17'  
 TOTAL TRAVERSE LENGTH: 20,146'  
 SURVEY PRECISION: 1/118.506  
 JOB NO.: \_\_\_\_\_

SECTION 6, TOWNSHIP 5 SOUTH, RANGE 69 WEST

DATA BY: Engineering Surveys, Inc.

DATE: February, 1990

BASIS OF BEARINGS: The South line of the SW 1/4 of Section 6 being  
 N 89° 01' 15" E according to the deed from  
 George Pallaoro to CDOH.